

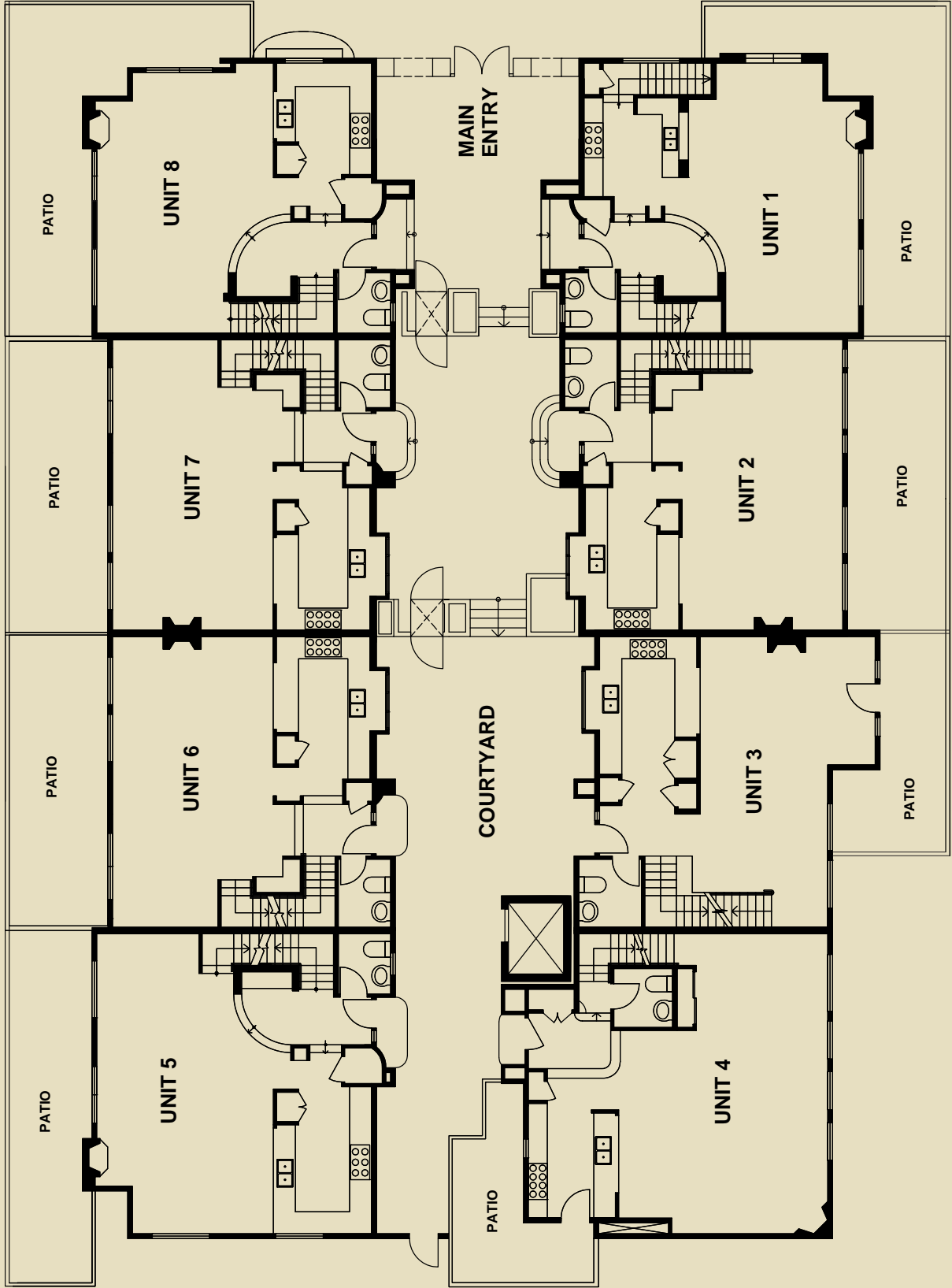


Agar Homes present 1837 TWELVE STREET TOWNHOMES. These EIGHT upscale three bedroom multi-level condominiums offer inviting, open floor plans. Each living space boasts hardwood floors, solid granite countertops, crown molding, stainless steel appliances, dual paned windows, air conditioning and modern style master bathrooms.

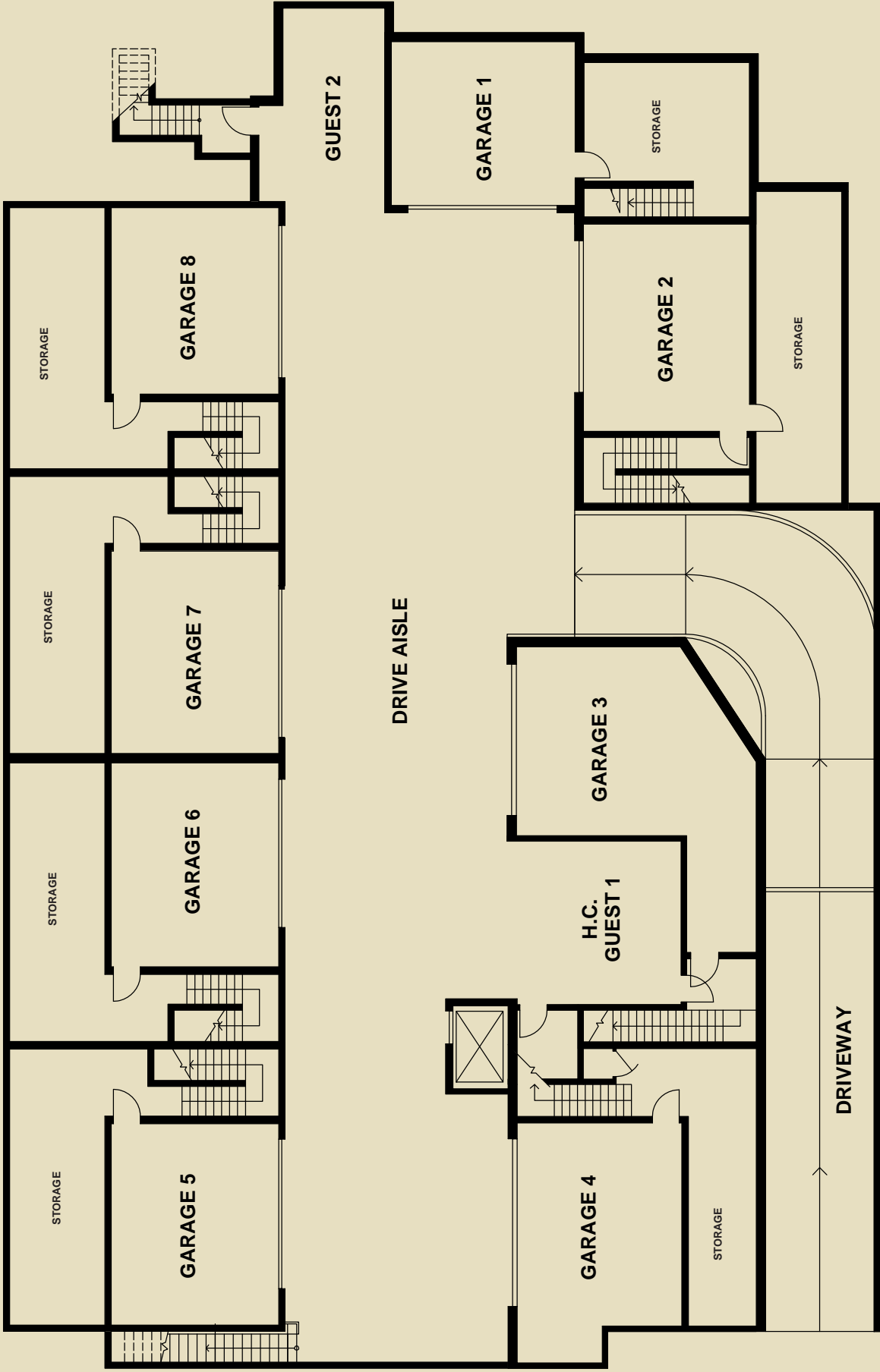
1837 TWELVE STREET TOWNHOMES are just north of Pico, near Santa Monica College. Great area close to local shops and biking distance to the beach and downtown. Convenient access to the 10 freeway in prime neighborhood of proposed transit corridor.

- Handcrafted iron work throughout
- Blown glass with decorative iron work on exterior lighting
- Solid modern stone countertops and backsplashes throughout kitchens
- Solid modern stone counter tops in all bathrooms
- Pre-wired "flat screen ready" walls over fireplace mantel
- Travertine tiles in bathrooms and kitchen floor
- Walnut hardwood floors throughout
- All cabinetry is solid maple wood in a modern finish
- Stainless steel appliances
- Designer interior lighting
- Crown molding
- Brushed nickel faucets and accessories
- Local parks within walking distance
- Secure, gated community feel
- A/C
- Most bedrooms with private balconies
- Large modern bathrooms.
- Video surveillance and Alarm systems

UNITS LAYOUT



GARAGE PLAN



UNIT 1

3 BEDROOMS

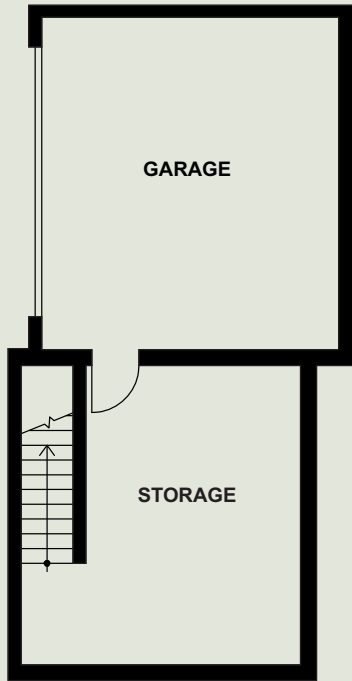
2.5 BATHS

GARAGE: 432 Sq.Ft.

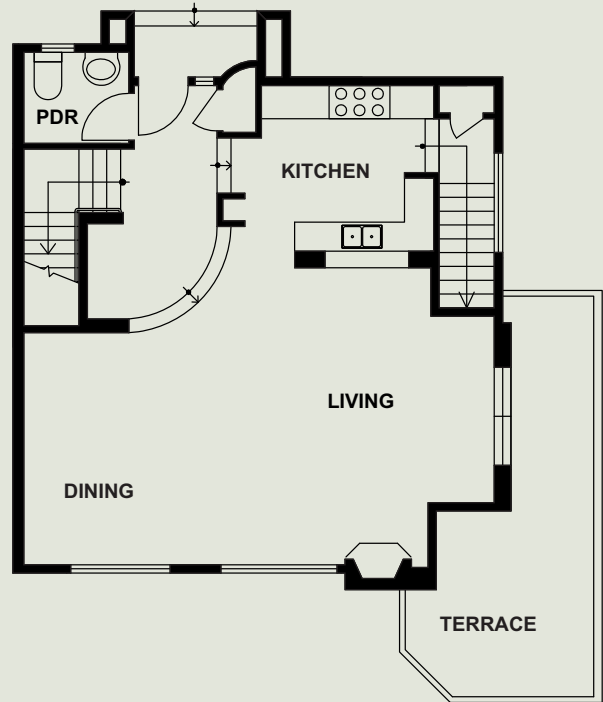
LIVING AREA: 1819 Sq.Ft.

PATIO AND DECKS: 846 Sq.Ft.

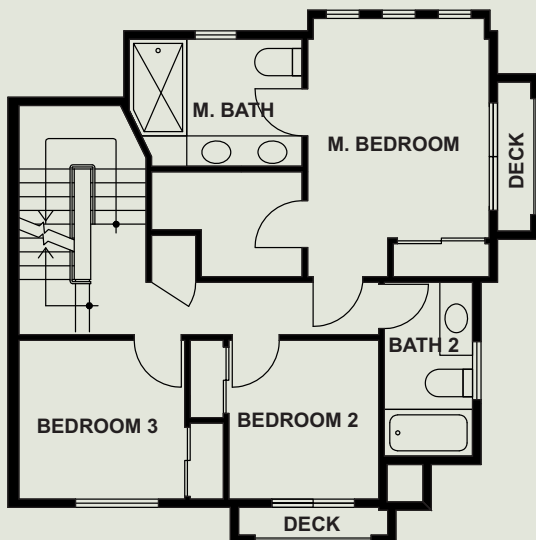
UNFINISHED AREA (STORAGE): 295 Sq.Ft.



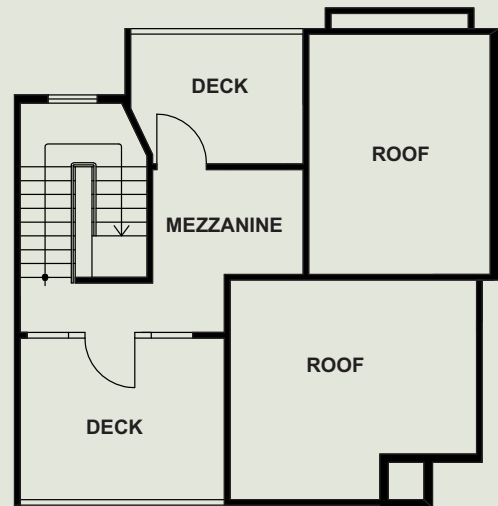
GARAGE PLAN



FIRST FLOOR PLAN



SECOND FLOOR PLAN



MEZZANINE FLOOR PLAN

UNIT 2

3 BEDROOMS

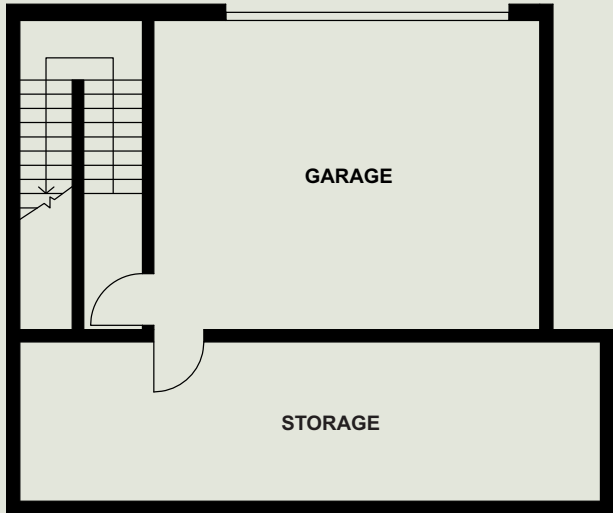
2.5 BATHS

GARAGE: 474 Sq.Ft.

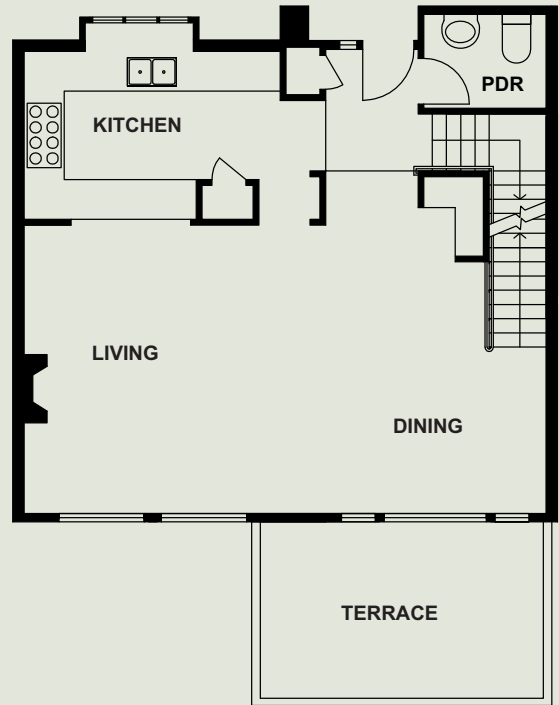
LIVING AREA: 1881 Sq.Ft.

PATIO AND DECKS: 780 Sq.Ft.

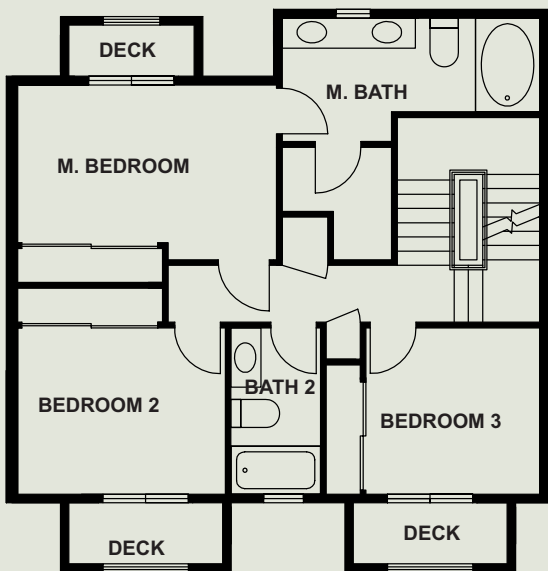
UNFINISHED AREA (STORAGE): 384 Sq.Ft



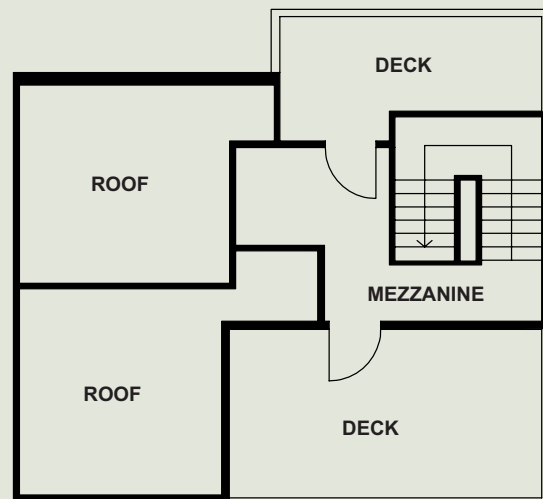
GARAGE PLAN



FIRST FLOOR PLAN



SECOND FLOOR PLAN



MEZZANINE FLOOR PLAN

UNIT 3

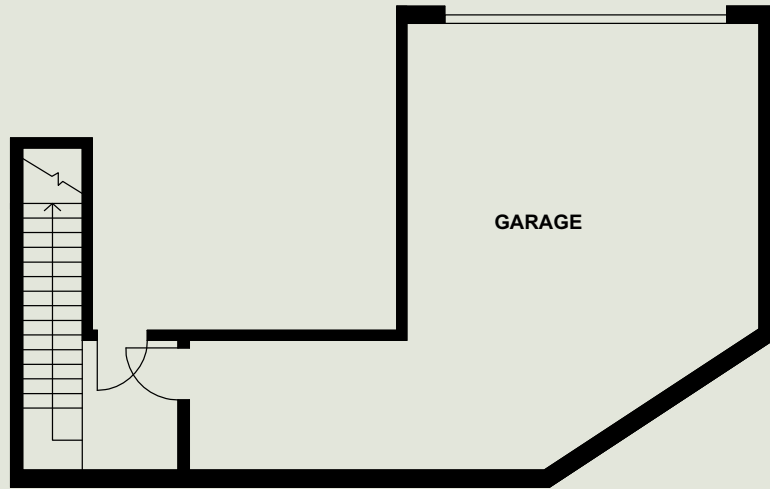
3 BEDROOMS

2.5 BATHS

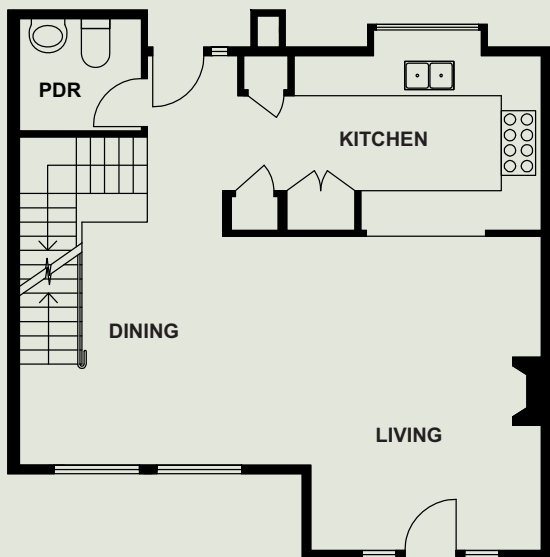
GARAGE: 735 Sq.Ft.

LIVING AREA: 1812 Sq.Ft.

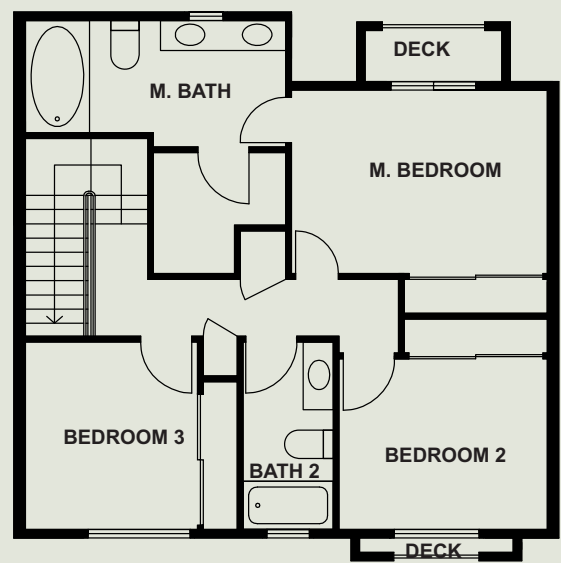
PATIO AND DECKS: 245 Sq.Ft.



GARAGE PLAN



FIRST FLOOR PLAN



SECOND FLOOR PLAN

UNIT 4

3 BEDROOMS

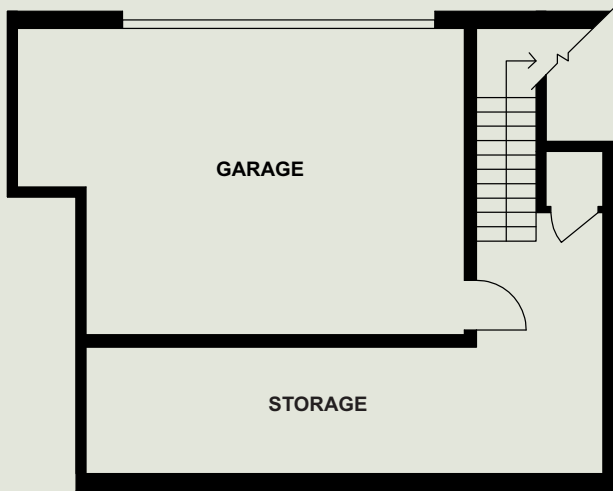
2.5 BATHS

GARAGE: 525 Sq.Ft.

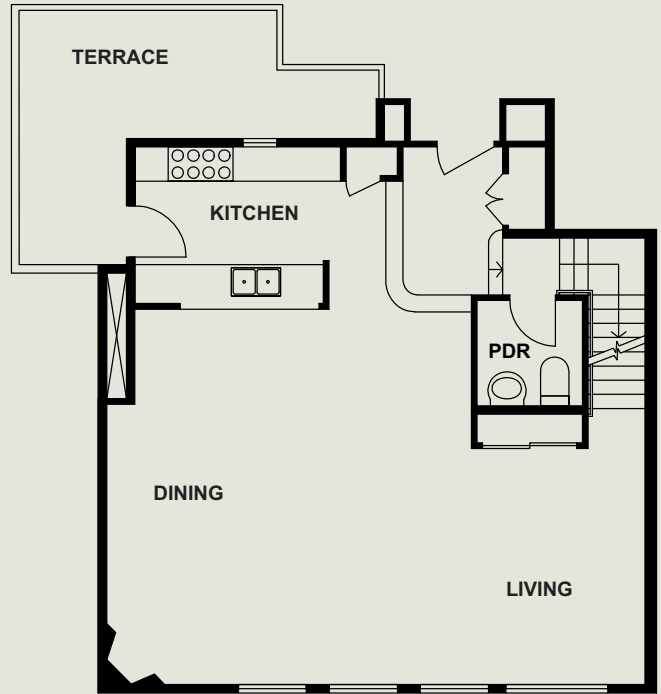
LIVING AREA: 1968 Sq.Ft.

PATIO AND DECKS: 540 Sq.Ft.

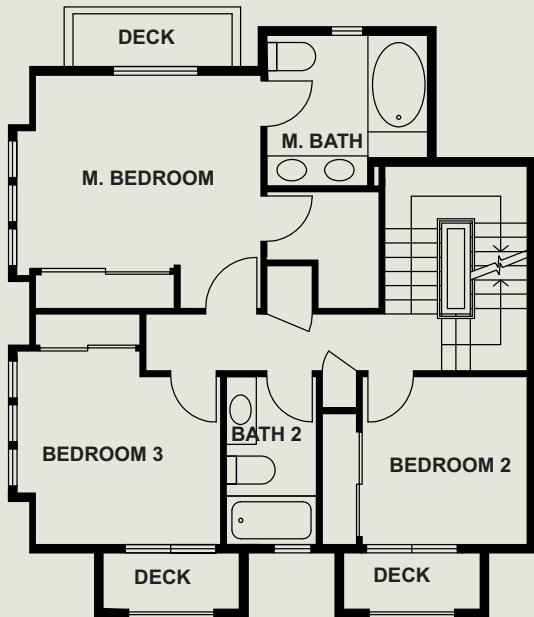
UNFINISHED AREA (STORAGE): 342 Sq.Ft.



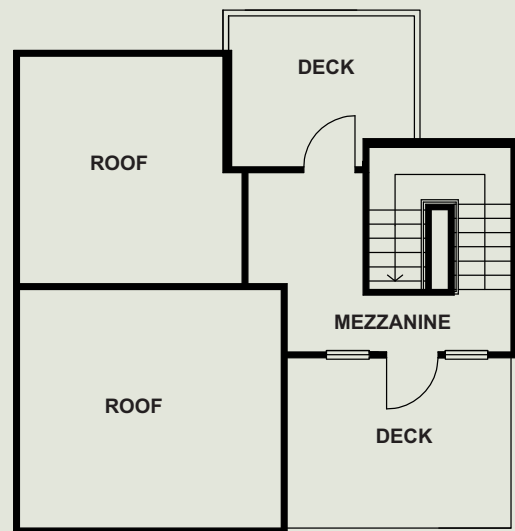
GARAGE PLAN



FIRST FLOOR PLAN



SECOND FLOOR PLAN



MEZZANINE FLOOR PLAN

UNIT 5

3 BEDROOMS

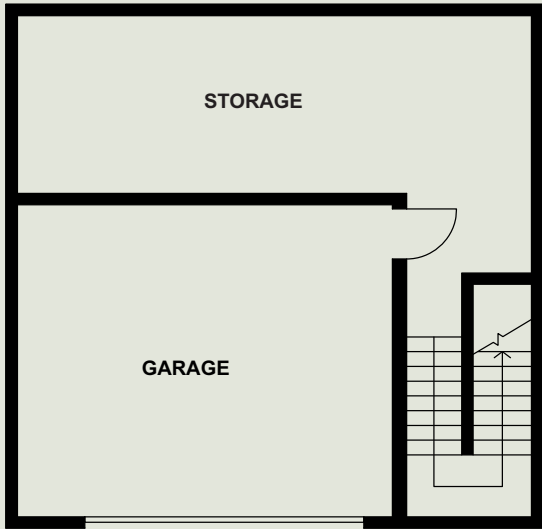
2.5 BATHS

GARAGE: 395 Sq.Ft.

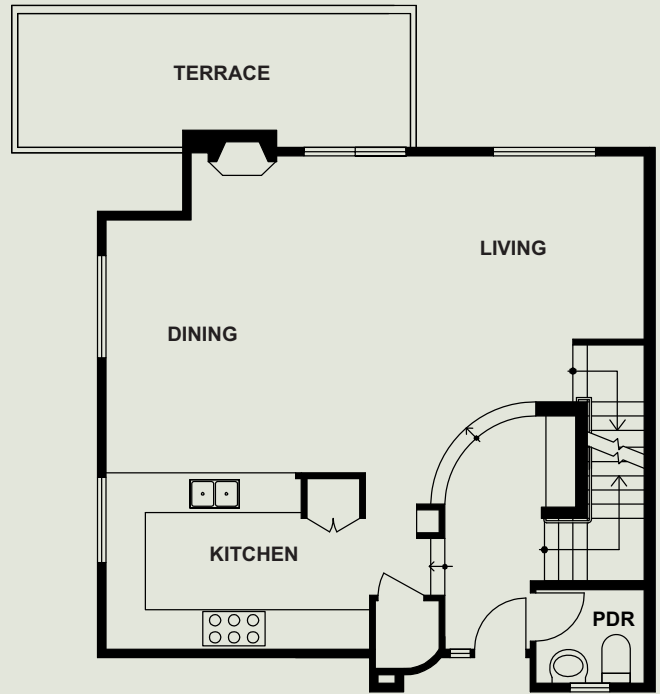
LIVING AREA: 1988 Sq.Ft.

PATIO AND DECKS: 675 Sq.Ft.

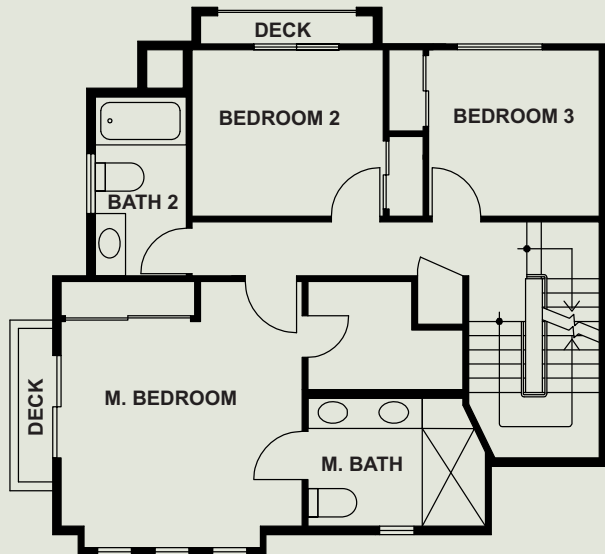
UNFINISHED AREA (STORAGE): 459 Sq.Ft.



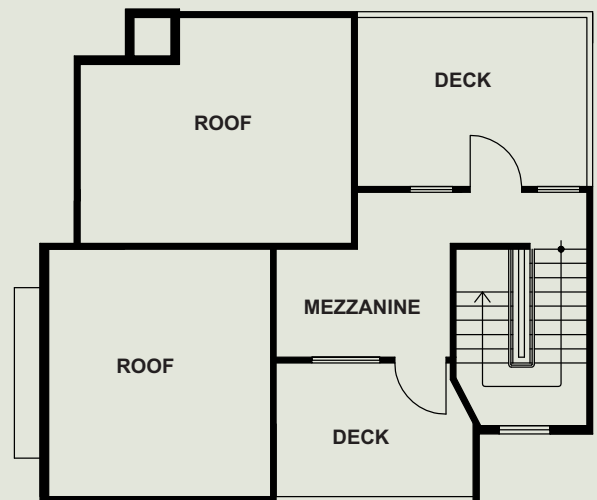
GARAGE PLAN



FIRST FLOOR PLAN



SECOND FLOOR PLAN



MEZZANINE FLOOR PLAN

UNIT 6

3 BEDROOMS

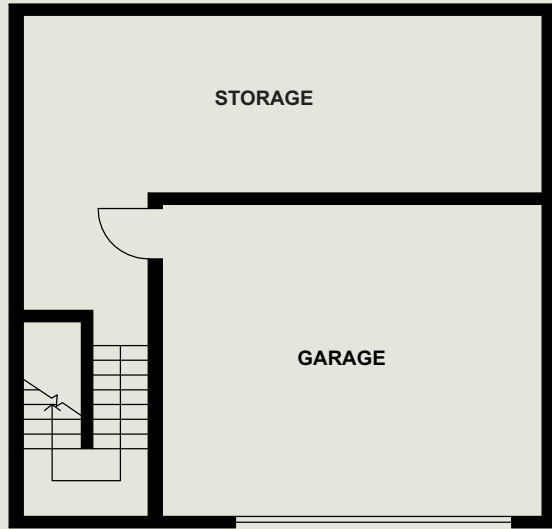
2.5 BATHS

GARAGE: 416 Sq.Ft.

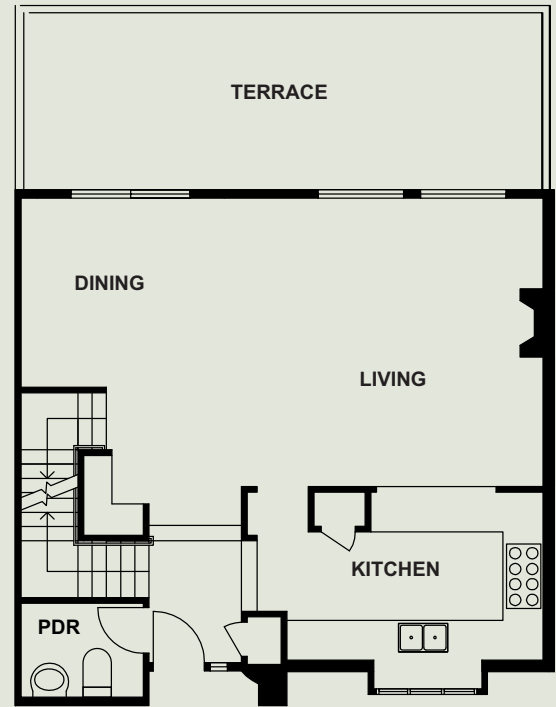
LIVING AREA: 1886 Sq.Ft.

PATIO AND DECKS: 725 Sq.Ft.

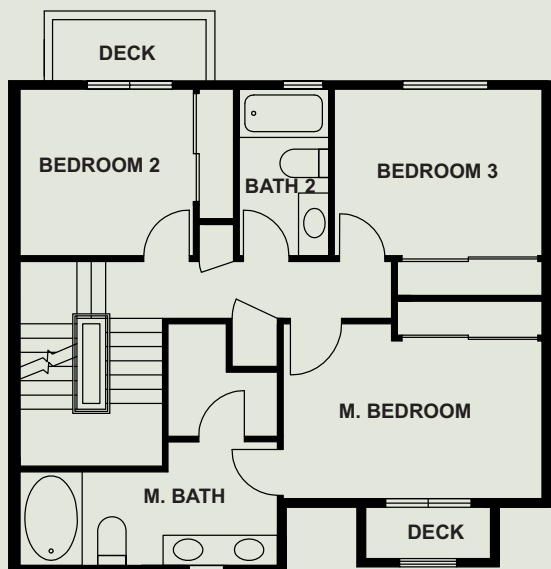
UNFINISHED AREA (STORAGE): 468 Sq.Ft.



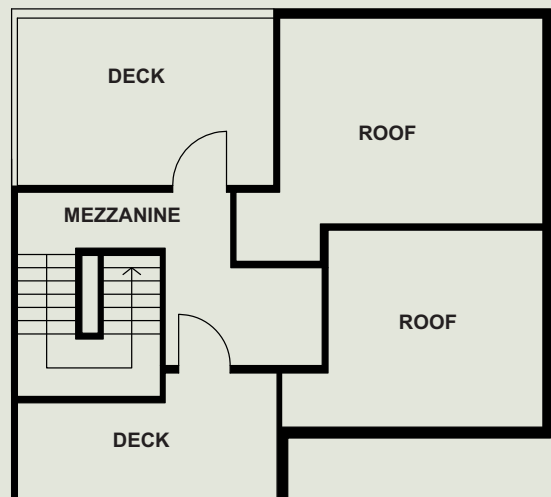
GARAGE PLAN



FIRST FLOOR PLAN



SECOND FLOOR PLAN



MEZZANINE FLOOR PLAN

UNIT 7

3 BEDROOMS

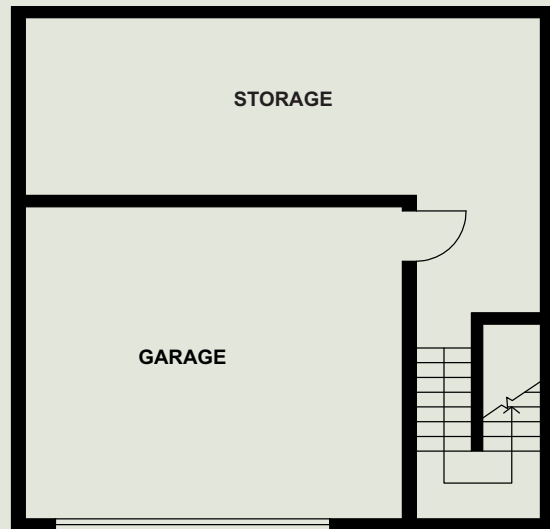
2.5 BATHS

GARAGE: 416 Sq.Ft.

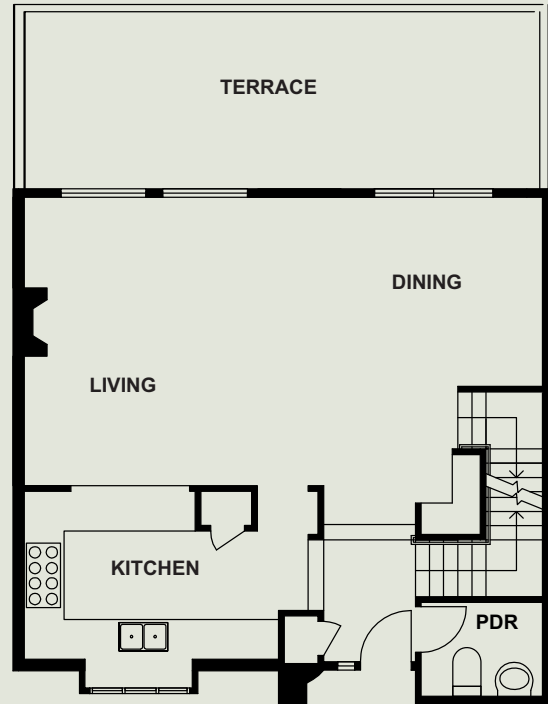
LIVING AREA: 1886 Sq.Ft.

PATIO AND DECKS: 725 Sq.Ft.

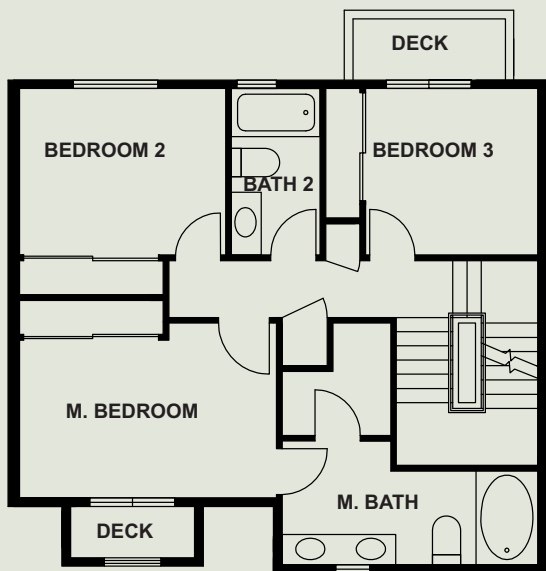
UNFINISHED AREA (STORAGE): 468 Sq.Ft.



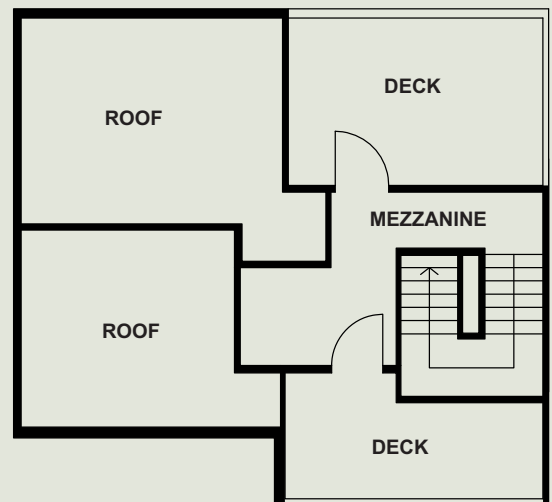
GARAGE PLAN



FIRST FLOOR PLAN



SECOND FLOOR PLAN



MEZZANINE FLOOR PLAN

UNIT 8

3 BEDROOMS

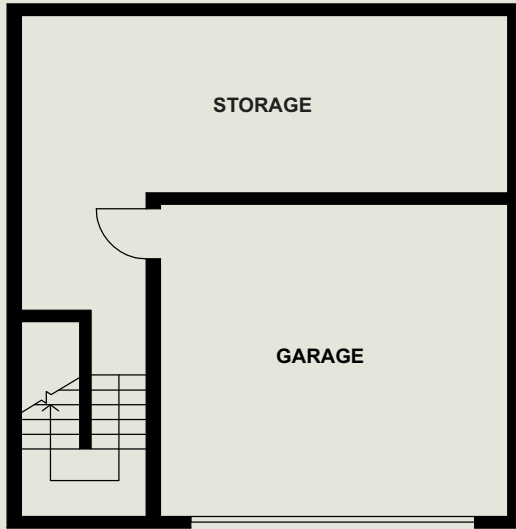
2.5 BATHS

GARAGE: 414 Sq.Ft.

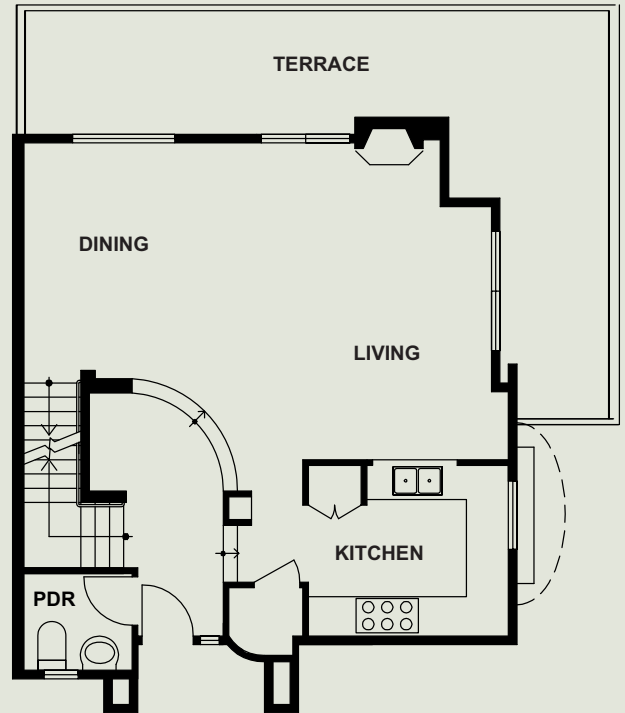
LIVING AREA: 1876 Sq.Ft.

PATIO AND DECKS: 726 Sq.Ft.

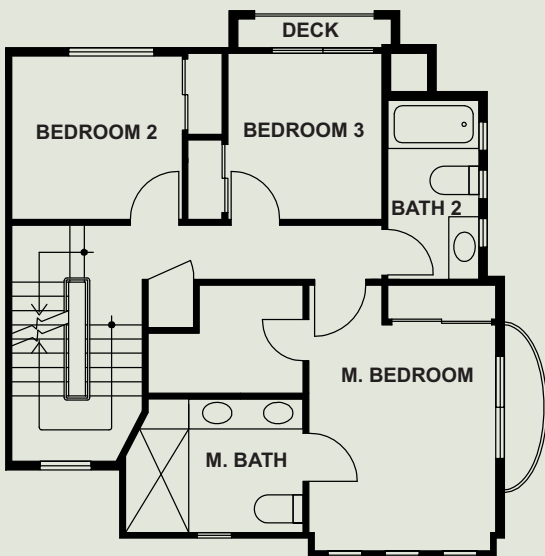
UNFINISHED AREA (STORAGE): 399 Sq.Ft.



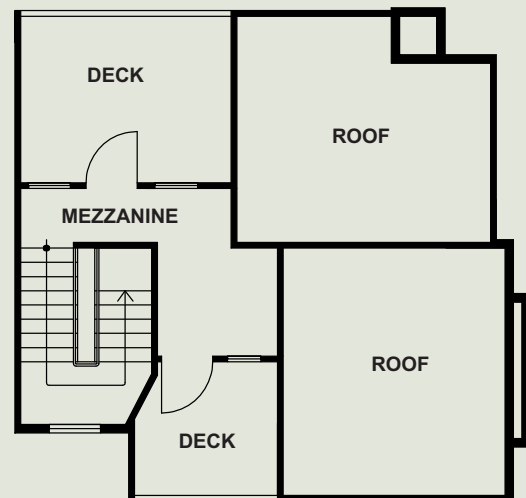
GARAGE PLAN



FIRST FLOOR PLAN



SECOND FLOOR PLAN



MEZZANINE FLOOR PLAN